

Remote level gauge type G

With protective tube light LED

Application and function

The remote level gauge type G can be used for every steam generator according to TRD 401 except continuous steam generators.

The geodetic pressure difference of two water columns is transferred to a blue separating liquid in the remote level gauge. This liquid is insoluble in water and non-toxic.

The height of the indicating liquid column indicates the water level in the steam drum on a scale of 1:1 or on a reduced scale.

The product corresponds to the PED directive 97/23/EEC art. 3 par. 3 SEP (Sound Engineering Practice).

Applied rules as per TRD/AD2000 or ASME-Boilers.

Technical basic equipment

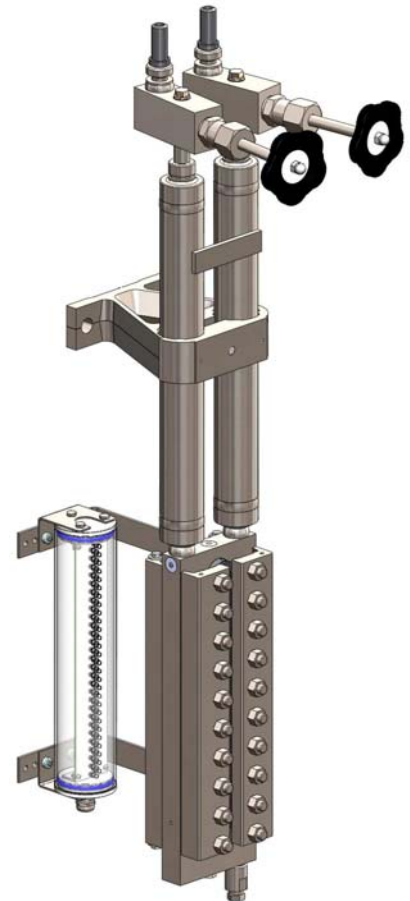
- Body material stainless steel
- Sight length see table
- Illumination device IP67
- Shutoff valves type HA300, HA310 and HA320
- Indicator valves type AF410 and 411

Technical data

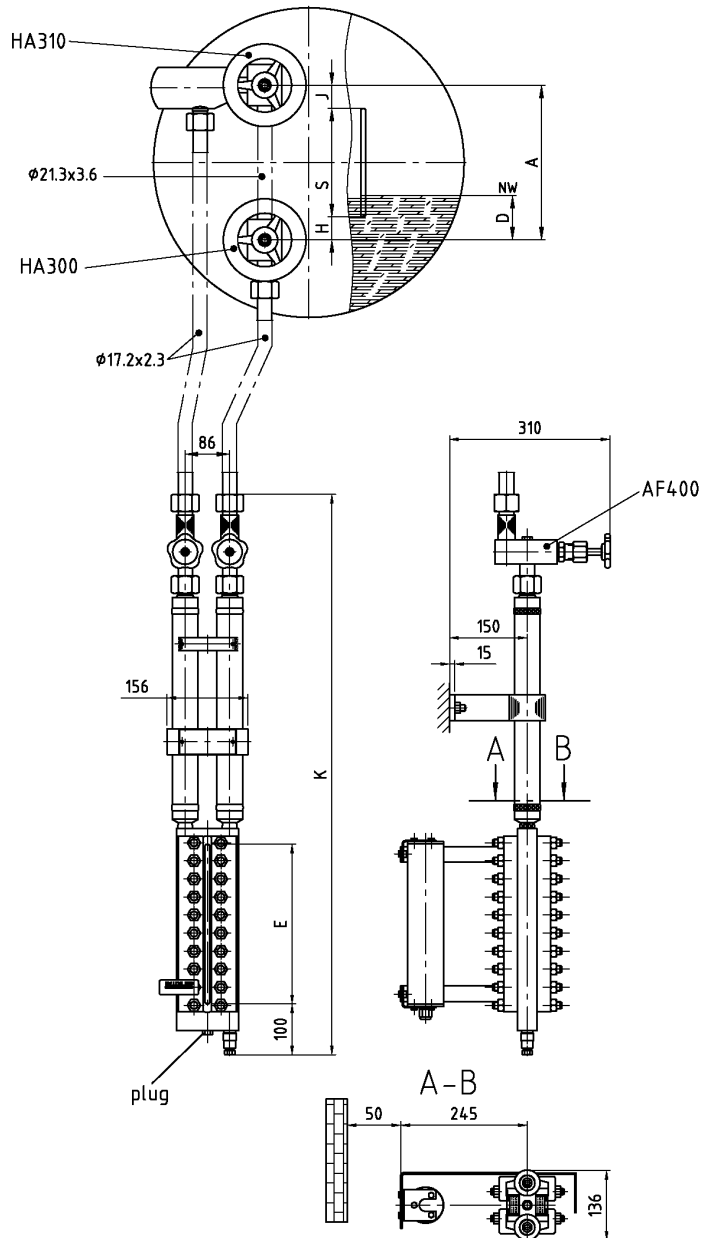
Allowable pressure	PS	[bar]	10-200
Allowable temperature	TS	[° C]	40
Indicator valve	Type		AF 410
	Data sheet		D-09-D-16362-0
Shutoff valve	Type		HA300, HA310, HA320
	Data sheet		D-09-D-16363-0

Illumination device protective tube light LED	Protection	IP67
	Data sheet	D-A1-D-18931-0

Indicating liquid	Density	1,68
	Safety data sheet	D-A1-D-18629-0



Dimensions



Allowable pressure	PS	[bar]	10-50	80-200
Sight length	E/S	[mm]	310 or 390	
All. temperature range on body „remote level gauge“ and on indicator valve	TS	[° C]	2 up to 40	

